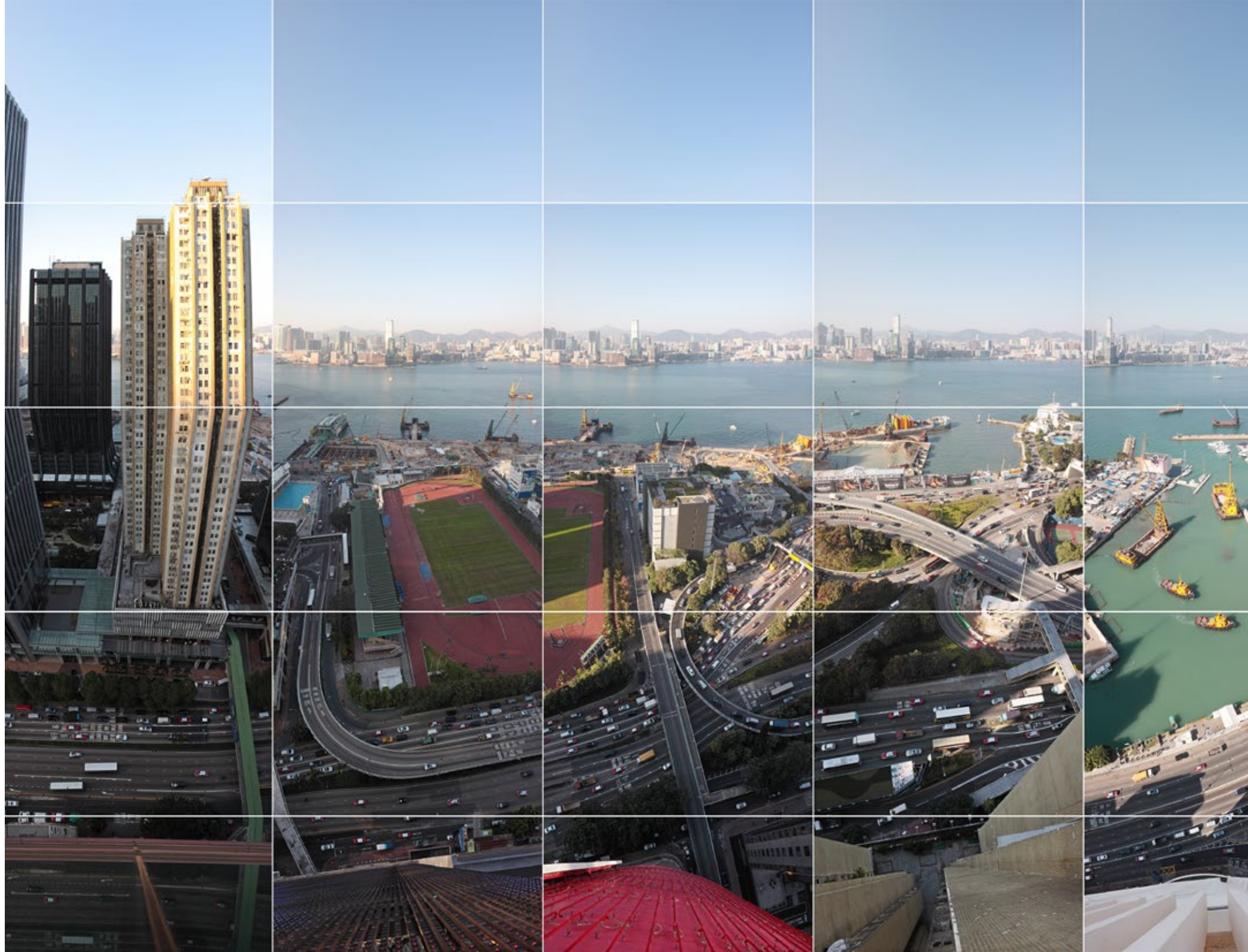


Expanding Perspectives

Chinese cities explored and reconstructed 2013 - 2015

Photography projects by Wouter van Buuren

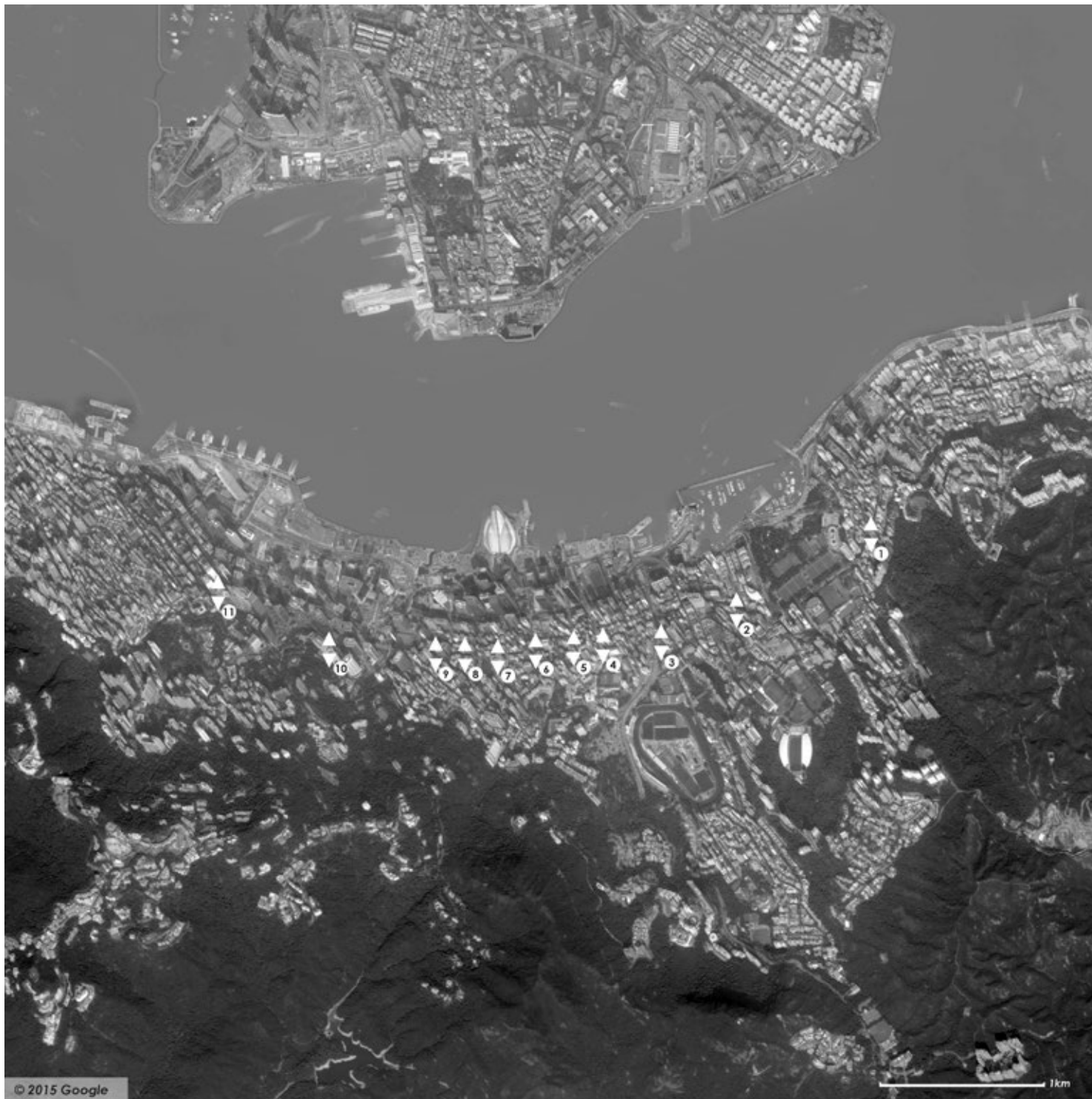




Expanding Perspectives

Chinese cities explored and reconstructed 2013 - 2015

*Photography projects by
Wouter van Buuren*



Maps are the starting point of my one-day journeys. By following a line on the map I can perceive the world in a mindful and indiscriminate manner.

Between 2012 and 2015 I explored and photographed some of the largest cities of the Chinese world; among them: Shanghai, Shenzhen, Wuhan, Chongqing, Anshan and Hong Kong. The overwhelming vastness of some of these metropolises symbolizes the current size and expansion of the world population.

In each city I drew a line on the map. During a single day I followed this line and photographed from the rooftops of the buildings I encountered. All the photographs were taken in the same compass directions, perpendicular to the line travelled. The photographs were joined into a larger image. The resulting image has a specific space-time structure which is cylindrical and can be imagined to perpetuate indefinitely. The layout of the photographs reflects the distribution of the actual locations and, at the same time, it follows the timeline of the one-day journey.

Wouter van Buuren
(Hong Kong, 2016)

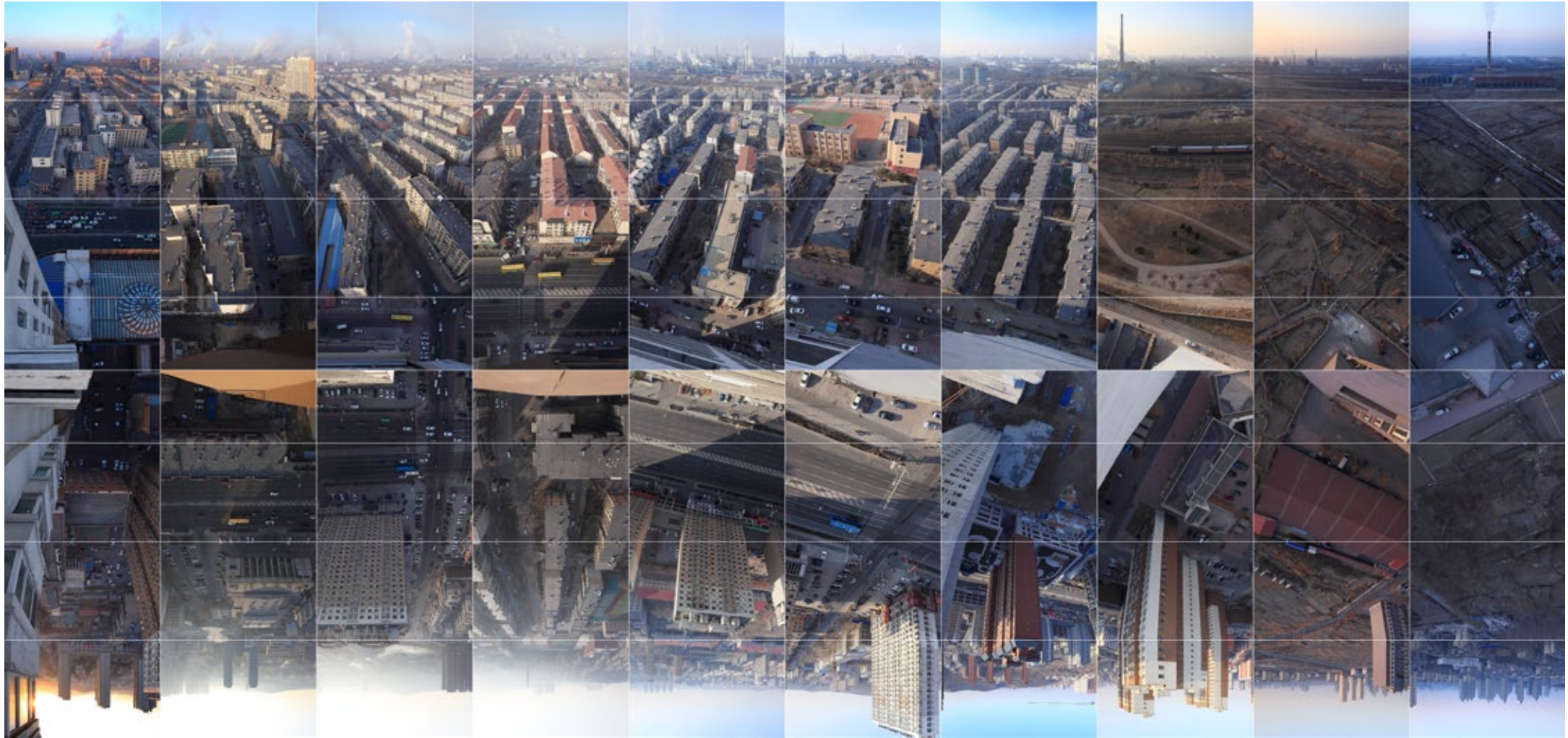










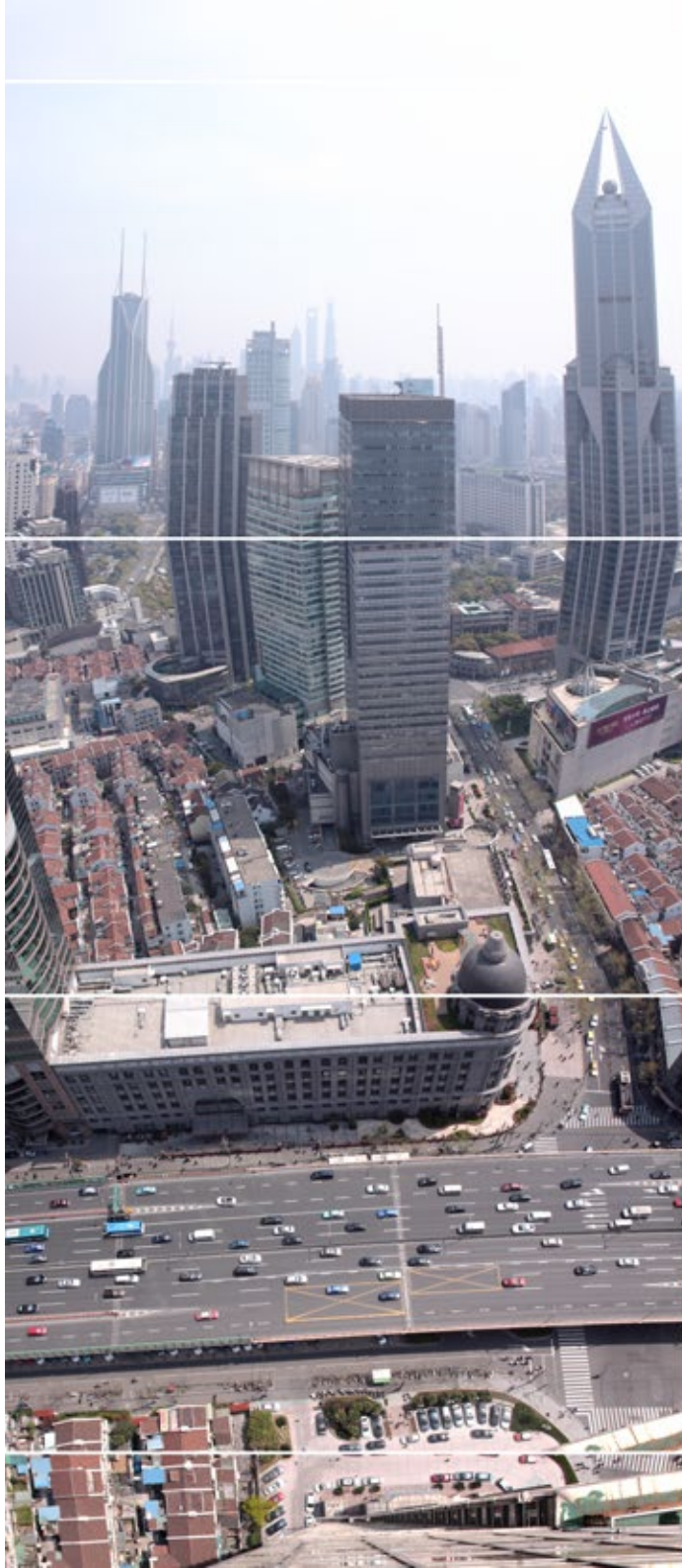












- p.6 Hong Kong Island - from Causeway Bay to Central - via Hennessey Road - 12-12-2014
7.51 - 8.10 - 8.44 - 10.13 - 10.40 - 11.40 - 12.43 - 12.56 - 13.37 - 14.03 - 15.22 - 16.19
110 x 194 cm
- p.7 Hong Kong Island - following the coastline from Quarry Bay to Wan Chai - 29-12-2014
7.55 - 8.40 - 9.52 - 10.19 - 10.52 - 11.27 - 12.12 - 14.40 - 15.47 - 16.15 - 16.53 - 17.11 - 17.49
110 x 229 cm
- p.8 Shenzhen - following Shennan East Road - 04-03-2013
8.01 - 8.36 - 9.47 - 11.38 - 12.08 - 12.48 - 13.43 - 14.24 - 15.01 - 16.06 - 18.37
110 x 201 cm
- p.9 Shanghai - following the North-South Elevated Road - 08-04-2013
7.03 - 7.35 - 9.24 - 10.02 - 10.42 - 11.14 - 13.12 - 13.33 - 14.37
110 x 174 cm
- p.10 Wuhan - following the Yangtze River - 26-03-2013
8.45 - 9.21 - 9.47 - 10.45 - 13.00 - 14.15 - 15.44 - 16.14 - 16.54
90 x 173 cm
- p.11 Anshan - following the Anshan Iron and Steel industrial site - 28-12-2015
7.40 - 8.35 - 9.14 - 9.53 - 12.10 - 13.08 - 14.08 - 15.21 - 15.54 - 16.21
90 x 191 cm
- p.12 Chongqing - following the Yangtze River - 17-4-2013
8.57 - 9.55 - 10.33 - 11.42 - 12.39 - 14.26 - 15.18 - 16.07 - 17.35
110 x 212 cm
- p.13 Shanghai - 10-04-2013
122 x 122 cm
- p.14 Hong Kong Island - North Point - 22-12-2014
122 x 122 cm
- p.15 Hong Kong Island - Des Voeux Road West - 30-12-2014
122 x 122 cm

Catalog for the exhibition:

Expanding Perspectives

Chinese cities explored and reconstructed 2013 – 2015

Photography projects by Wouter van Buuren

Goethe Gallery Hong Kong, September 2016

Venue partner: The Goethe-Institut Hong Kong

14/F HK Arts Centre

2, Harbour Road, Wanchai, Hong Kong



Sponsors: CBRE Global Investors, Rabobank Hong Kong

Support: Consulate General of the Kingdom of the Netherlands in Hong Kong and Macau

Advice: The Photocrafters

www.scapes.nl

© Wouter van Buuren 2016



Rabobank

